

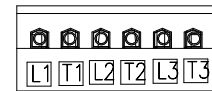
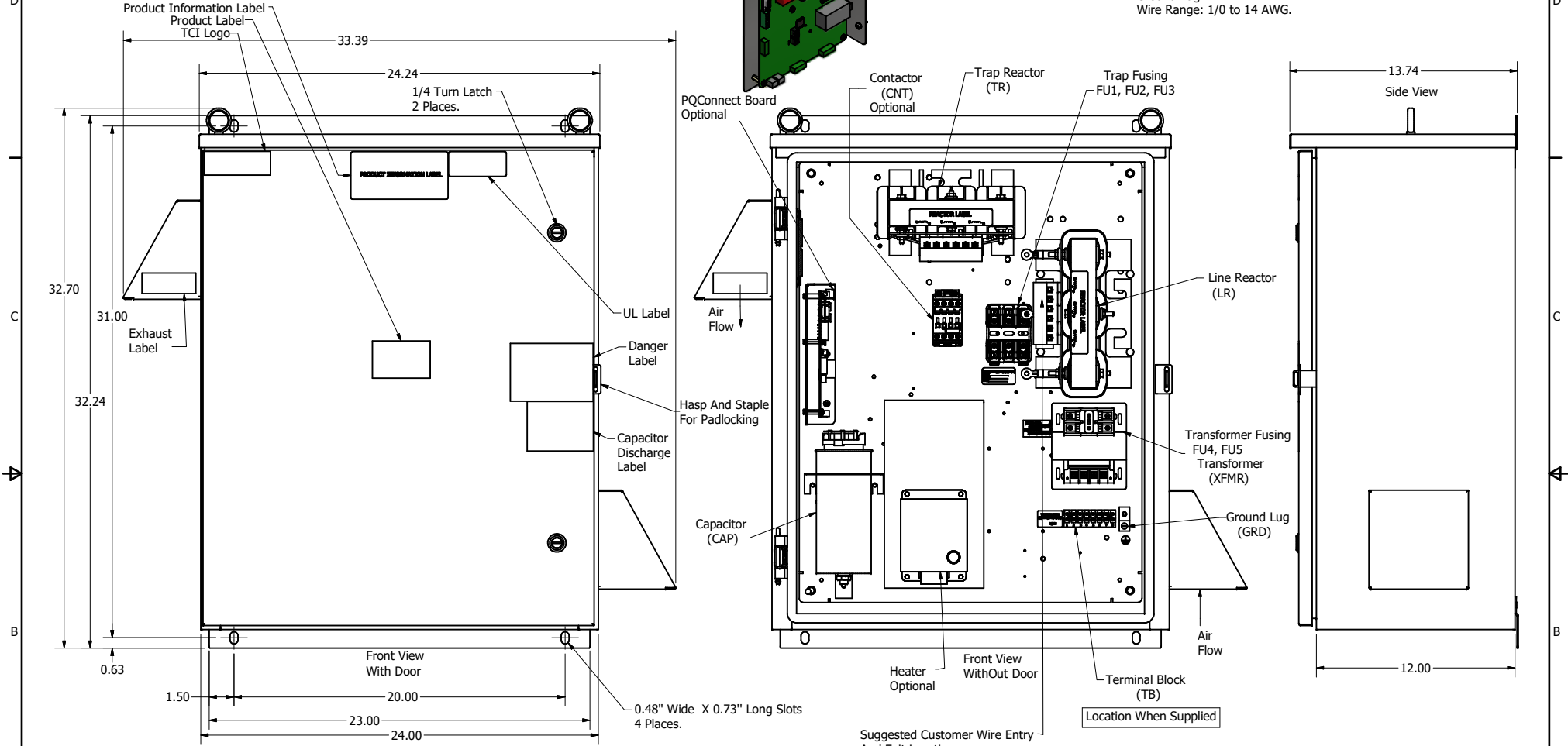
HGP Part Number	Schematic Drawing #	Approx Weight (LBS)
HGP0030AW3S0000	28697-4S	144
HGP0030AW3C0000	28697-4	145
HGP0030AW3C000H	28697-4H	149
HGP0030AW3S1000	29597-PQ1	147
HGP0030AW3C1000	29597-PQ	148
HGP0030AW3C100H	29597-PQH	152

HGP Part Number	HorsePower (HP)	Maximum Amps (A)	kVar	Harmonic	Voltage (V)	HZ	Phase
HGP0030AW3----	30	40	10	5th	480	60	3

Note: For Torque Information See IOM Manual

Customer Connections.
L1, T1, L2, T2, L3, T3
Wire Range: 1 AWG to 22 AWG.

Ground Lug
Wire Range: 1/0 to 14 AWG.



Components	HGP0030AW3----					
	S0000	C0000	C000H	S1000	C1000	C100H
Line Reactor (LR)	x	x	x	X	X	X
Trap Reactor (TR)	x	x	x	X	X	X
Capacitor (Cap)	x	x	x	X	X	X
Trap Fusing, FU1, FU2, FU3	x	x	x	X	X	X
Contactor (CNT)		x	x		X	X
Transformer (XFMR)	x	x	x	X	X	X
XFMR Fusing, FU4, FU5	x	x	x	X	X	X
Heater			x			X
PQConnect Board				X	X	X

NOTE: USE ONLY HUBS OR FITTINGS THAT COMPLY WITH UL514B FOR TYPE 3R ENCLOSURES

Customer Is Responsible For Installation to Meet All National And Local Electrical Codes.

Material(s) Shall be RoHS Compliant

THE INFORMATION AND DESIGNS CONTAINED IN THIS DRAWING ARE CONFIDENTIAL AND THE PROPRIETARY PROPERTY OF ALLIED MOTION TECHNOLOGIES INC. AND ITS SUBSIDIARIES. NEITHER THIS DESIGN NOR ANY INFORMATION CONTAINED IN THIS DRAWING MAY BE REPRODUCED OR DISCLOSED TO OTHERS WITHOUT THE EXPRESS WRITTEN CONSENT OF ALLIED MOTION TECHNOLOGIES INC. AND ITS SUBSIDIARIES.	REVISED	DATE	BY	TOLERANCES (EXCEPT AS NOTED)	 W132N10611 Grant Drive Germantown, WI 53022 © 2021 TCI, LLC An Official Motion Company HarmonicGuard Passive, HGP0030AW3---- 30HP, 480/3/60, Type 3R 105556DG	
	E	5599-1, GE to ABB CNT Update	8/24/2021	DSW		DECIMAL .XX ± .25 .XXX ± .10
	D	5662, ASC to Vishay Cap	7/16/2021	DSW		FRACTIONAL ± 1/16
	C	Add PQConnect	6/8/18	DSW		ANGULAR ± 1°
	NO	REVISION	DATE	BY		SCALE: 1/8